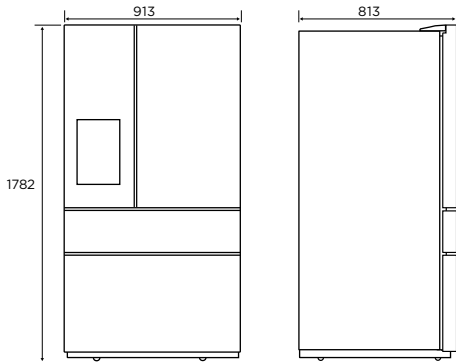
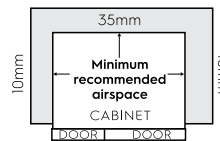
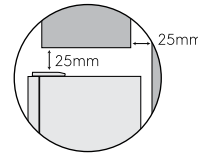


French door with convertible drawer

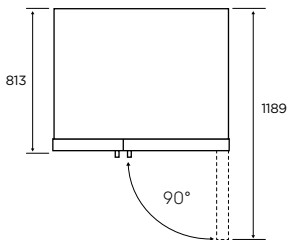
WHE6170BB, WHE6170SB



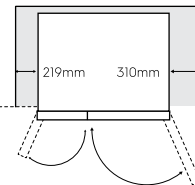
Minimum Recommended Airspaces



Please note: Doors are designed to sit proud of cabinetry (not flush)



Front face of bench aligned to front corner edge of cabinet.

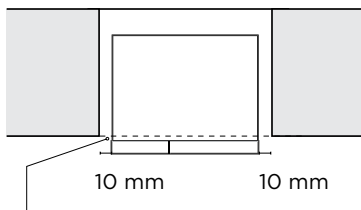


When positioned in a corner area, spacing of at least 310mm on the right hinge side and 219mm on the left hinge side will allow the doors to open enough to enable the removal of bins and shelves.

Installation options:

Minimum side clearance kitchen cabinet

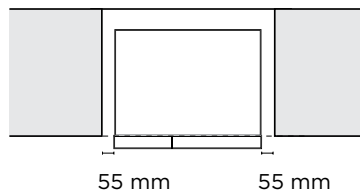
Fridge must sit 25mm proud of kitchen cabinetry.



Fridge must sit 25mm proud of kitchen cabinetry.

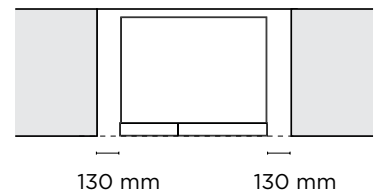
Front of fridge in line with kitchen cabinet

Side clearance must be 55mm either side of the fridge, to have the fridge doors sitting proud of the kitchen cabinetry.



Fridge door flush with the cabinetry

Side clearance must be 130mm either side of the fridge, to have the fridge doors sitting flush with the kitchen cabinetry.



Dimensions	Product Height	Product Width	Product Depth	Product Depth (Door Open)
WHE6170BB	1782	913	813	1189
WHE6170SB	1782	913	813	1189

Airspace	Side - both	Top	Behind
WHE6170BB	10	25	35
WHE6170SB	10	25	35

IMPORTANT

These dimensions are a guide only. All measurements are in millimetres (mm). For complete installation instructions, refer to the manual provided with product.
 © 2021 Electrolux Home Products Pty Ltd. ABN 51 004 762 341. W_DIM_WHE6170BB-SB_Oct21