



# DISHWASHER

WSF6608

Applicable to WSF6608 dishwashers  
with serial numbers greater than 82100000

## CONGRATULATIONS

Congratulations and thank you for choosing our product. We are sure you will find your new appliance a pleasure to use and a great asset to your cooking. Before you use the appliance, we recommend you read through the whole user manual which provides a description of the product and its functions.

To make the best use of your new appliance, it is important that the appliance is installed correctly and that you read the safety instructions carefully to avoid misuse and hazards. We recommend that you keep this instruction booklet for future reference and pass it on to any future owners. This appliance complies with the requirements of Australian Standard AS/NZ 60335.2.5.

### Conditions of use

This appliance is intended to be used in household and similar applications such as:

- Staff kitchen areas in shops, offices and other working environments
- Farm houses
- By clients in hotels, motels and other residential type environments
- Bed and breakfast type environments.

### Record model and serial number here:

Model: .....

Serial number:.....

## ENVIRONMENTAL TIPS

### Important – check for any damage or marks

If you find the dishwasher is damaged or marked, you must report it within 7 days if you wish to claim for damage/ marks under the manufacturer's warranty. This does not affect your statutory rights.

### IMPORTANT INFORMATION THAT MAY IMPACT YOUR MANUFACTURER'S WARRANTY

Adherence to the directions for use in this manual is extremely important for health and safety. Failure to strictly adhere to the requirements in this manual may result in personal injury, property damage and affect your ability to make a claim under the Westinghouse manufacturer's warranty provided with your product. Products must be used, installed and operated in accordance with this manual. You may not be able to claim on the Westinghouse manufacturer's warranty in the event that your product fault is due to failure to adhere this manual.

## CONTENTS

<b>Important safety instructions</b> . . . . .	<b>3</b>
Recycling . . . . .	3
Safety information . . . . .	3
Recommendations . . . . .	4
Items not suitable for dishwashing . . . . .	4
<b>Description of your appliance</b> . . . . .	<b>5</b>
<b>Technical specifications</b> . . . . .	<b>5</b>
Conformity with the standards and Test data . . . . .	5
<b>Quick Start Guide</b> . . . . .	<b>8</b>
<b>Installing the machine</b> . . . . .	<b>9</b>
Positioning the machine . . . . .	9
Water connections . . . . .	9
Water inlet hose . . . . .	9
Water outlet hose . . . . .	9
Electrical connection . . . . .	10
Fitting the machine undercounter . . . . .	11
<b>Preparing the machine for use</b> . . . . .	<b>12</b>
Prior to using the machine . . . . .	12
Detergent usage . . . . .	12
Filling the detergent compartment . . . . .	12
<b>Combined detergent</b> . . . . .	<b>12</b>
<b>Filling with rinse aid and setting</b> . . . . .	<b>13</b>
<b>Loading your dishwasher</b> . . . . .	<b>14</b>
Alternative basket loads . . . . .	17
Standard loading and Test data . . . . .	18
<b>Program descriptions</b> . . . . .	<b>18</b>
Program items . . . . .	18
<b>Switching on the machine and selecting a program</b> <b>19</b>	
Switching on the machine . . . . .	19
<b>Program follow-up</b> . . . . .	<b>20</b>
Changing a program . . . . .	20
Cancelling a program . . . . .	20
Switching the machine off . . . . .	20
<b>Maintenance and Cleaning</b> . . . . .	<b>21</b>
Filters . . . . .	21
Spray arms . . . . .	22
<b>Hose filter</b> . . . . .	<b>22</b>
<b>Failure codes and what to do in case of failure</b> . . . . .	<b>23</b>
<b>Practical and useful information</b> . . . . .	<b>23</b>
<b>Troubleshooting</b> . . . . .	<b>24</b>
<b>Notes</b> . . . . .	<b>25</b>
<b>Warranty</b> . . . . .	<b>27</b>

## ENVIRONMENTAL TIPS

Information on disposal for users

- Most of the packaging materials are recyclable. Please dispose of those materials through your local recycling depot or by placing them in appropriate collection containers.
- If you wish to discard this product, please contact your local authorities and ask for the correct method of disposal.

## IMPORTANT SAFETY INSTRUCTIONS

These warnings have been provided in the interest of safety. You **MUST** read them carefully before installing or using the appliance.

Please read the user manual carefully and store in a handy place for later reference. Pass the user manual on to possible new owners of the appliance.

If you need assistance, contact your Customer Care Department. The manufacturer will not accept liability, should these instructions or any other safety instructions incorporated in this book be ignored.

The symbols you will see in this booklet have these meanings:

### **WARNING**

This symbol indicates information concerning your personal safety.

### **TIPS AND INFORMATION**

This symbol indicates tips and information about use of the appliance.

### **ENVIRONMENTAL TIPS**

This symbol indicates tips and information about economical and ecological use of the appliance.

### **Recycling**

- Certain components and the packaging of your machine have been produced from recyclable materials.
- Plastic parts are marked with international abbreviations: (>PE< , >PS< , >POM< , >PP< , ...)
- Cardboard parts have been produced from recycled paper and they should be disposed of into waste paper collection containers for recycling.
- These materials should not be disposed of into garbage bins. They should be delivered to recycling centres instead.
- Contact relevant centres in order to obtain information on methods and points of disposal.

### **Safety Information**

#### **When you take delivery of your machine**

- Check for any damage to your machine or to its packaging. Never start a damaged machine, make sure to contact an authorised technician.
- Unwrap the packaging materials as indicated and dispose of them in accordance with the rules.

#### **The points to pay attention during machine installation**

- Choose a suitable, safe and level location to install your machine.
- Carry out the installation and connection of your machine by following the instructions.

- This machine should be installed and repaired by an authorised technician only.
- Only original spare parts should be used with the machine.
- Before commencing the dishwasher installation, be sure that the machine is unplugged.
- Check whether the indoor electrical fuse system is connected according to the regulations.
- Make sure that the electrical information on the rating plate is the same as the power supply. If not, contact an electrician.
- Always use a correctly installed shockproof socket.
- Make sure not to cause damage to the mains plug and to the mains cable. Should the mains cable need to be replaced, this must be carried out by our Authorised Service Centre.
- Connect the mains plug to the mains socket only at the end of the installation. Make sure that there is access to the mains plug after the installation.
- Do not pull the mains cable to disconnect the appliance. Always pull the mains plug.
- If the supply cord is damaged, it must be replaced by the manufacturer, its Authorised Service Centre or similarly qualified persons in order to avoid a hazard.
- Pay special attention and make sure that the machine does not crush the power cord.
- Never use an extension cord or a multiple socket to make a connection. The plug should be easily accessible after the machine has been installed.
- After installing the machine, run it unloaded for the first time.

### **In daily use**

- Do not stand, sit or place a load on the open door of the dishwasher, it may fall over.
- Only use detergents and rinse aids which are produced specifically for dishwashers. Otherwise Electrolux does not take any responsibility for any damage that might occur to your machine.

### **WARNING**

The water in the machine's washing section is not drinking water, do not drink it.

- Do not use water spray and steam to clean the appliance.
- Due to danger of explosion, do not put into the machine's washing section any chemical agents such as solvents.
- Check whether plastic items are heat-resistant before washing them in the machine.
- Do not put into your machine those items which are not suitable for dishwashing. Also, do not overload basket.

## SAFETY INFORMATION AND RECOMMENDATIONS

- The machine door should not be opened while the machine is in operation, to avoid the risk of hot water spraying out. A safety device ensures that the machine stops if the door is opened.

### WARNING

Do not leave your dishwasher's door open, this may lead to accidents and injury.

### RISK OF INJURY OR PERMANENT DISABILITY

Place knives and other sharp ended objects in the cutlery basket in the point down position.

- This appliance is not intended for use by persons (including children) with reduced physical, sensory or mental capabilities, or lack of experience and knowledge, unless they have been given supervision or instruction concerning use of the appliance by a person responsible for their safety.

#### For your children's safety

- After removing the machine's packaging, make sure that the packaging material is out of reach of children.
- Do not allow children to play with or start the machine.
- Keep your children away from detergents and rinse aids.
- Keep children away from the machine while it is open because there may still be residues of cleaning substances inside the machine.
- Be sure that your old machine does not pose any threat to children. Remove the dishwasher door lock and power supply cord.

#### In case of malfunctioning

- Any malfunction in the machine should be repaired by qualified persons. Any repair work performed by anyone other than the authorised service personnel will cause your machine to be left outside the scope of warranty.
- Prior to any repair work on the machine, be sure to unplug the dishwasher from the power supply. Do not pull by the cable when unplugging. Make sure to turn off the water tap.

#### Recommendations

- For energy and water saving, remove coarse residues on your dishes before placing the dishes into the machine. Start your machine after having fully loaded it.
- Use the pre-wash program only whenever necessary.
- Place items such as bowls, glasses and pots into the machine face down.

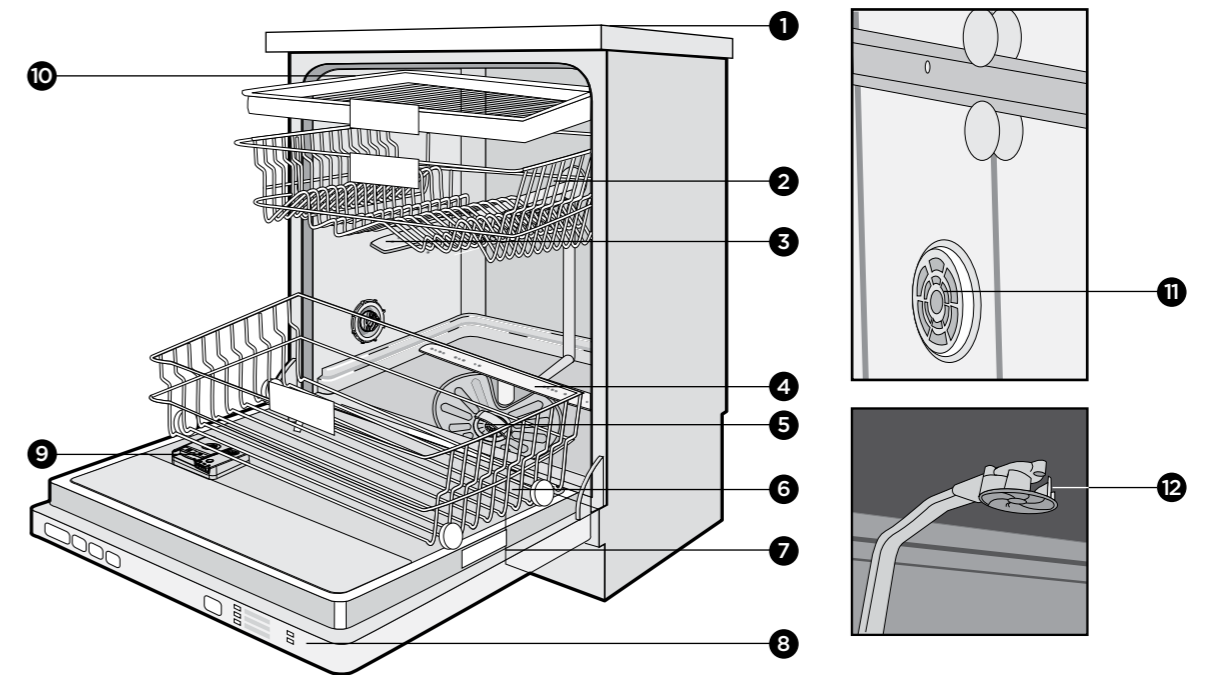
#### Items not suitable for dishwashing:

- Cigarette ashes, candle leftovers, polish, paint, chemical substances, iron-alloy materials;
- Forks, spoons and knives with wooden or bone, ivory or nacre-coated handles; glued items, items soiled with abrasive, acidic or base chemicals;
- Plastic items that are not heat-resistant, copper or tin coated containers;
- Aluminium and silver objects (they may discolour, become dull);
- Certain delicate glass types, porcelains with ornamental printed patterns (may fade even after the first wash); certain crystal items (may lose their transparency over time), laminated cutlery that is not heat-resistant, lead crystal glasses, cutting boards, items manufactured with synthetic fibre;
- Absorbent items such as sponges or kitchen rags are not suitable for dishwashing.

### WARNING

Some dishwasher detergents are strongly alkaline. They can be extremely dangerous if swallowed. Avoid contact with the skin and eyes and keep children away from the dishwasher when the door is open. Check that the detergent compartment is empty after completion of wash cycle.

## DESCRIPTION OF YOUR APPLIANCE



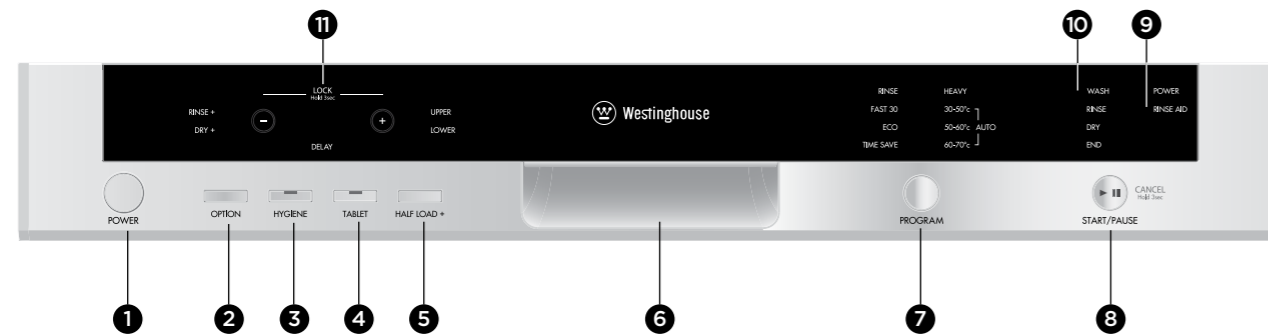
- |                           |                                     |
|---------------------------|-------------------------------------|
| 1 Worktop                 | 7 Rating plate                      |
| 2 Upper basket with racks | 8 Control panel                     |
| 3 Upper spray arm         | 9 Detergent and rinse-aid dispenser |
| 4 Lower spray arm         | 10 Upper cutlery basket             |
| 5 Filters                 | 11 Turbo drying unit                |
| 6 Lower basket            | 12 Ceiling spray impeller           |

## TECHNICAL SPECIFICATIONS

Capacity.....	15 place settings
Height.....	850 mm
Height (without worktop) .....	820* mm
Width.....	598 mm
Depth .....	598 mm
Net weight.....	56 kg
Electricity input.....	220-240 V, 50 Hz
Total power.....	1900 W
Heating power.....	1800 W
Pump power .....	100W
Drain pump power.....	30 W
Water supply pressure .....	0.03 MPa (0,3 bar) - 1 MPa (10 bar)
Water supply temperature.....	5 - 60°C
Current .....	10 A

- Electrolux reserves the right to amend design and technical specifications.
  - Do not use this appliance with power and temperature specifications different to those indicated.
  - Do not change the specification of this appliance.
- \* with counterweight and insulation removed

## DESCRIPTION OF YOUR APPLIANCE



### 1. Power button

When pressed on, the machine is energised and the power light illuminates.

### 2. Option button rinse+ / dry+

You can add extra rinsing or drying functions for the selected program by using this option.

Once you select rinse+ function, the light for extra rinsing illuminates, washing-rinsing time will be added into the selected program to ensure that your dishes will be cleaner.

Once you select dry+ function, the light for extra drying illuminates, extra heating and drying time will be added into the selected program to be sure that your dishes will be drier.

### 3. Hygiene button

By using this option, washing temperature and periods during respective programs may be changed, which ensures more hygienic washing.

### 4. Tablet button

Use this option when using combined detergent that contains rinse aid and extra functions.

### 5. Half load + button

Using the half load+ function, three sections for washing can be selected; lower basket, upper basket and both baskets.

If you have a small number of dishes in your machine to wash in both baskets, press the half load+ button and select the position in which both lights are illuminated.

If you have dishes only in the upper basket, press the half load+ button and select the position in which the upper light is illuminated. Washing occurs only on the upper basket of your machine.

No dishes should be placed in the lower basket while using this option.

If you have dishes only in the lower basket, press half load+ button and select the position in which the lower light is illuminated.

Washing occurs only on the lower basket of your machine. In using this option, make sure that there are no dishes in the upper basket.

**NOTE:** If you have used this option on the last washing program, this option will remain active also on the next washing program. If you do not want to use this option on the newly selected washing program, press the selected feature button again, and check that the light on the button goes off.

### 6. Door handle

The door handle is used to open/close the door of your machine.

### 7. Program button

With the program button, you can select a suitable program for your dishes.

### 8. Start/Pause button

The Start/Pause button will start the selected program. In the Pause condition while wash indicator light is on, Start/Pause LED will blink.

### 9. Rinse aid/power indicators

When the rinse aid light illuminates, fill in rinse aid chamber.

The power light indicates power is available to the appliance.

**NOTE:** If you have used an extra option on the last washing program, this feature will remain active also on the next washing program. To deselect an option on the newly selected washing program, press the selected option button again, and check that the indicator light on the button goes off.

### 10. Progress indicator Lights

Program status can be monitored via the progress indicator lights on control panel:

- Wash
- Rinse
- Dry
- End

### 11. Time indicator and delay display

The time indicator displays the program time and time remaining for the program.

In addition you can delay the start of the program by pressing the "+" and "-" buttons before the program is commenced. The delay function is indicated by the letter "H" followed by the number of hours selected.



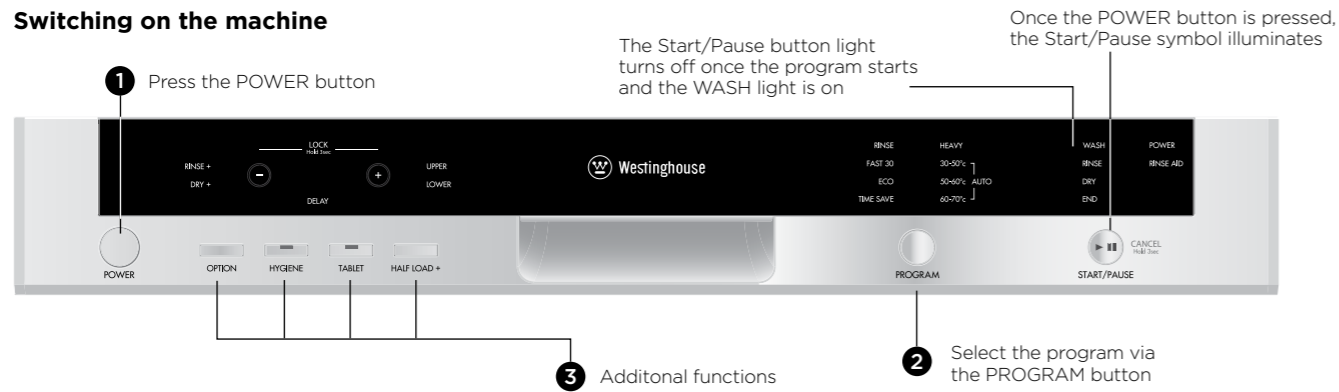
If you want to change the delay time, you can reset it by pressing START/PAUSE and then using the "+" and "-" buttons to select the new delay time, then press START/PAUSE to activate.

### Child Lock Operation

In order to activate child lock, press "+" and "-" buttons simultaneously for 3 seconds. At this time, "CL" appears for 2 seconds on remaining time indicator. To deactivate child lock, press "+" and "-" buttons again simultaneously for 3 seconds. "CL" will blink once.

## QUICK START GUIDE

### Switching on the machine



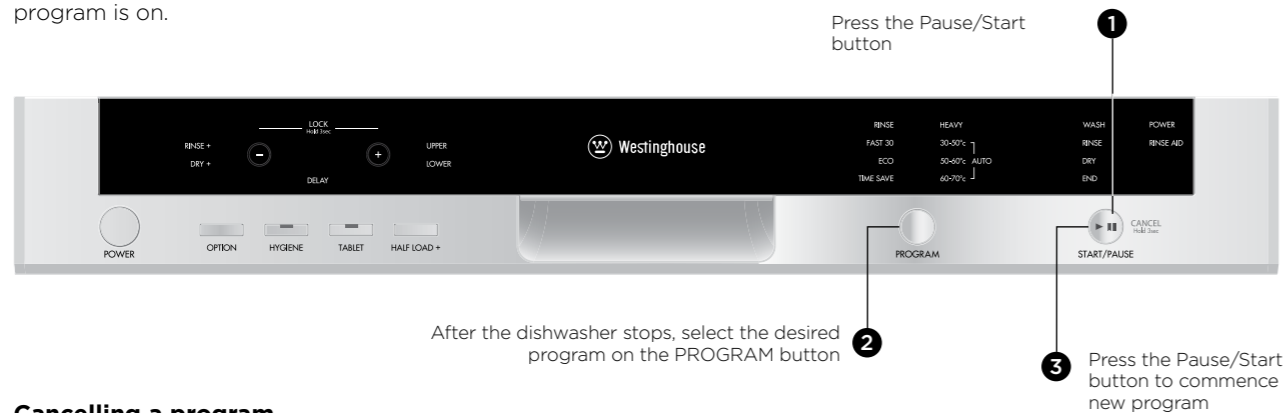
### Progress indicator

You can follow the program flow using the progress indicator lights located on the control panel.



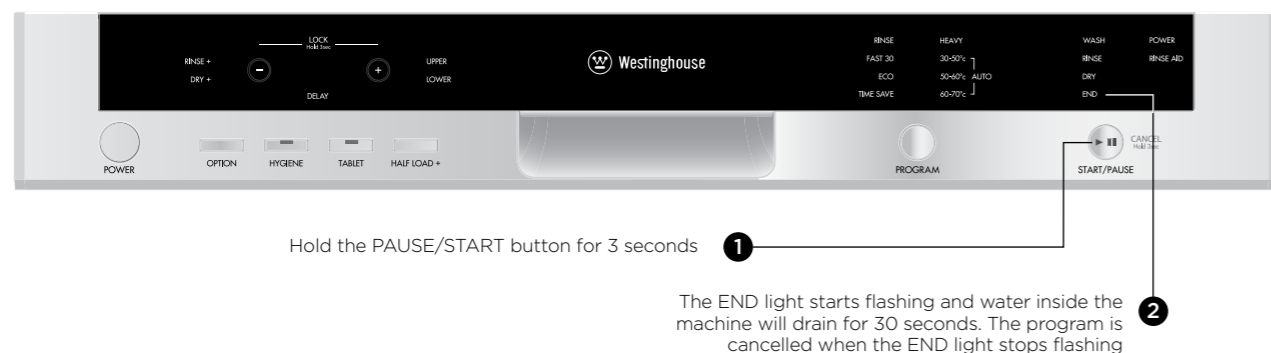
### Changing a program

If you would like to change programs while a washing program is on.



### Cancelling a program

If you want to cancel current program for any reason.



## INSTALLING THE MACHINE

### Positioning the machine

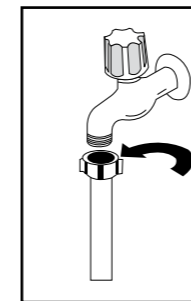
When considering the location for the dishwasher, ensure that there is adequate space to enable loading and unloading of the dishes.

- Do not put your machine in any location where the ambient temperature can fall below 5°C.
- Before positioning, take the machine out of its packaging by following the warnings located on the package.
- Position the machine close to a water tap and drain. You need to position your machine, taking into consideration that its connections will not be altered once they are made.
- Do not grip the machine by its door or panel in order to move it.
- Take care to leave a certain clearance from all sides of the machine so that you can comfortably move it back and forth during cleaning.
- Make sure that the water inlet and outlet hoses do not get squeezed while positioning the machine. Also, make sure that the machine does not stand on the electrical cable. Adjust the machine's feet so that it is level and stable. Proper positioning of the machine ensures problem-free opening and closing of its door.
- If the door of your machine does not close properly, check if the machine is stable on the floor; if not, adjust the feet and ensure it is level and stable.

### Water connection

Ensure that the indoor plumbing is suitable for installing a dishwasher and complies with AS/NZS 3500.1. Also, we recommend that you fit a filter at the entrance of your place or apartment so as to avoid any damage to your machine because of any contamination (sand, clay, rust etc) that might be occasionally carried in through the main's water supply or the indoor plumbing, and to avoid problems of staining and formation of deposits after washing.

### Water inlet hose



Do not use the water inlet hose of your old machine, you must use the new water inlet hose supplied with your machine. Before connecting the water inlet hose to the water tap, ensure clean water is flowing from the tap before making the connection. Connect the water inlet hose directly to the water inlet tap. The pressure supplied by the tap should be at a minimum of 0.03 MPa and at a maximum of 1 MPa. If

the water pressure is above 1 MPa, a pressure-relief valve should be installed.

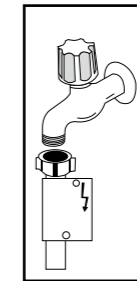


**WARNING**

Only turn the locking nut to secure hose - do not turn the hose.

- The first time you use the appliance, make sure that there is no leakage.
- The water inlet hose has a safety valve and a sheath with an inner mains cable.

After the connections are made, the tap should be turned on fully and checked for water tightness. For the safety of your machine, make sure to always turn off the water inlet tap after each wash program is finished.



**WARNING**

**NOTE:** Aquastop inlet hose has components using 240V. Do not cut Aquastop inlet hose. Do not let it get folded, twisted, kinked or crushed.



**WARNING**

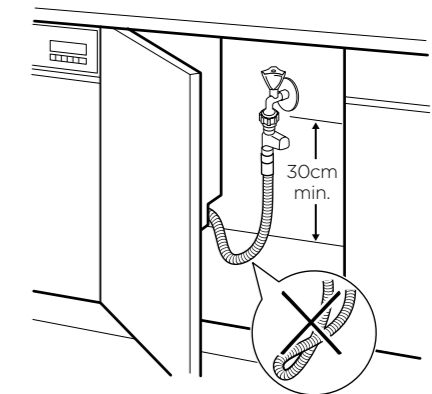
**NOTE:** A water tempering valve is required if the water temperature is over 60°C.



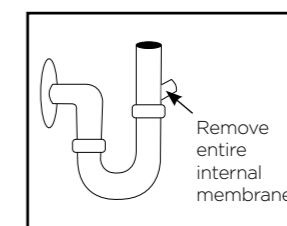
**CAUTION**

Always use new hoses when you connect the appliance to the water mains. Old hoses must not be used. The water inlet hose must be examined at an interval of twelve months for deterioration and replaced if necessary.

In order to pass the safety valve through the kitchen cabinets, an opening of at least 45mm x 90mm is needed.



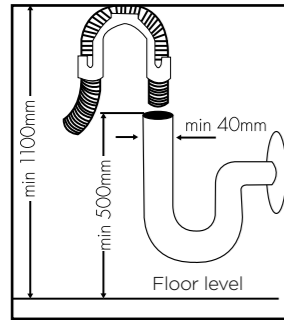
### Water drain hose



If you connect the water drain hose to a trap spigot under the sink, remove the plastic membrane. If you do not remove the entire membrane, remaining food can cause blockage in the drain hose spigot. Ensure a hose clamp is used to secure the hose to the spigot.

## INSTALLING THE MACHINE

### Water drain hose

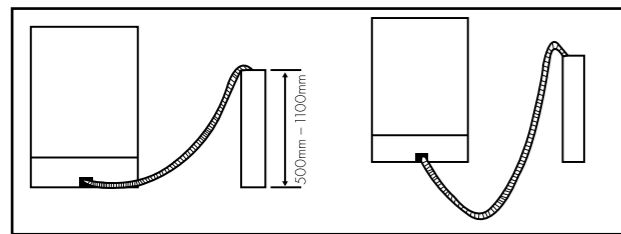


The water drain hose can be connected either directly to the water drain hole or to the sink outlet spigot. Using a hose hook (if available), the water can be drained directly into the sink by positioning the hose hook over the edge of the sink.

This connection should be at a minimum of 50cm and at a maximum of 110cm above the base of the dishwasher.

### WARNING

**Maximum drain hose length is 4m. Longer hose length will prevent correct draining, and result in poor wash performance.**



✓  
(correct)

✗  
(incorrect)

### WARNING

#### Electrical Connection

The plug of your machine should be connected to an earthed outlet that supplies suitable voltage and current. If there is no earthing installation, have a competent electrician carry out an earthing installation. In case of usage without earthing installed, our company will not be responsible for any loss of usage that might occur.

The indoor fuse current value should be 10-16 A.

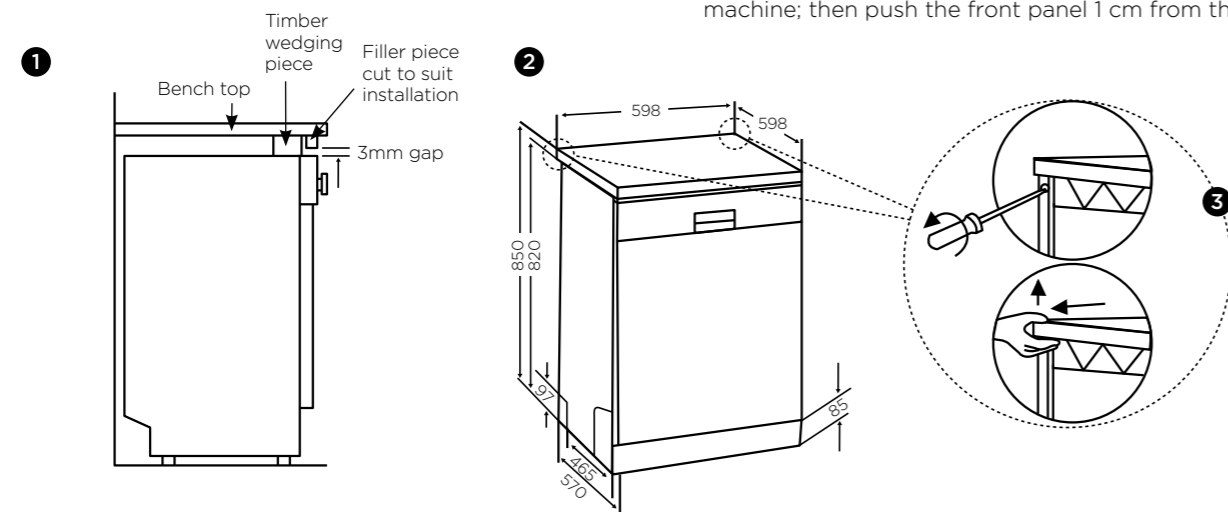
Your machine is designed for 220-240 V. The machine should not be plugged in during installation.

- Always use the molded plug supplied with your machine.
- Running in low voltage will cause a decline in washing quality.
- The machine's electrical cable should be replaced by an authorised service or an authorised electrician only. Failure to do so may lead to accidents.
- For safety purposes, always make sure to disconnect the plug when a wash program is finished.
- In order not to cause an electric shock, do not unplug when your hands are wet.
- When disconnecting your machine from the mains supply, always pull from the plug. Never pull the cord itself.

#### Fitting the machine undercounter

If you wish to fit your machine undercounter, check whether you have sufficient space under your countertop and whether the wiring-plumbing is suitable to do so.

- 1 To ensure the stability of the dishwasher for an underbench installation, if the underbench dimension is greater than 820mm, any gap between the dishwasher and the underside of the benchtop should be bridged with a packing piece. This may be achieved by wedging a piece of timber between the dishwasher and the benchtop as shown
- 2 If required, remove the worktop as shown in the illustration.
- 3 To remove the worktop, remove the screws that hold the worktop which are located at the rear of the machine; then push the front panel 1 cm from the front



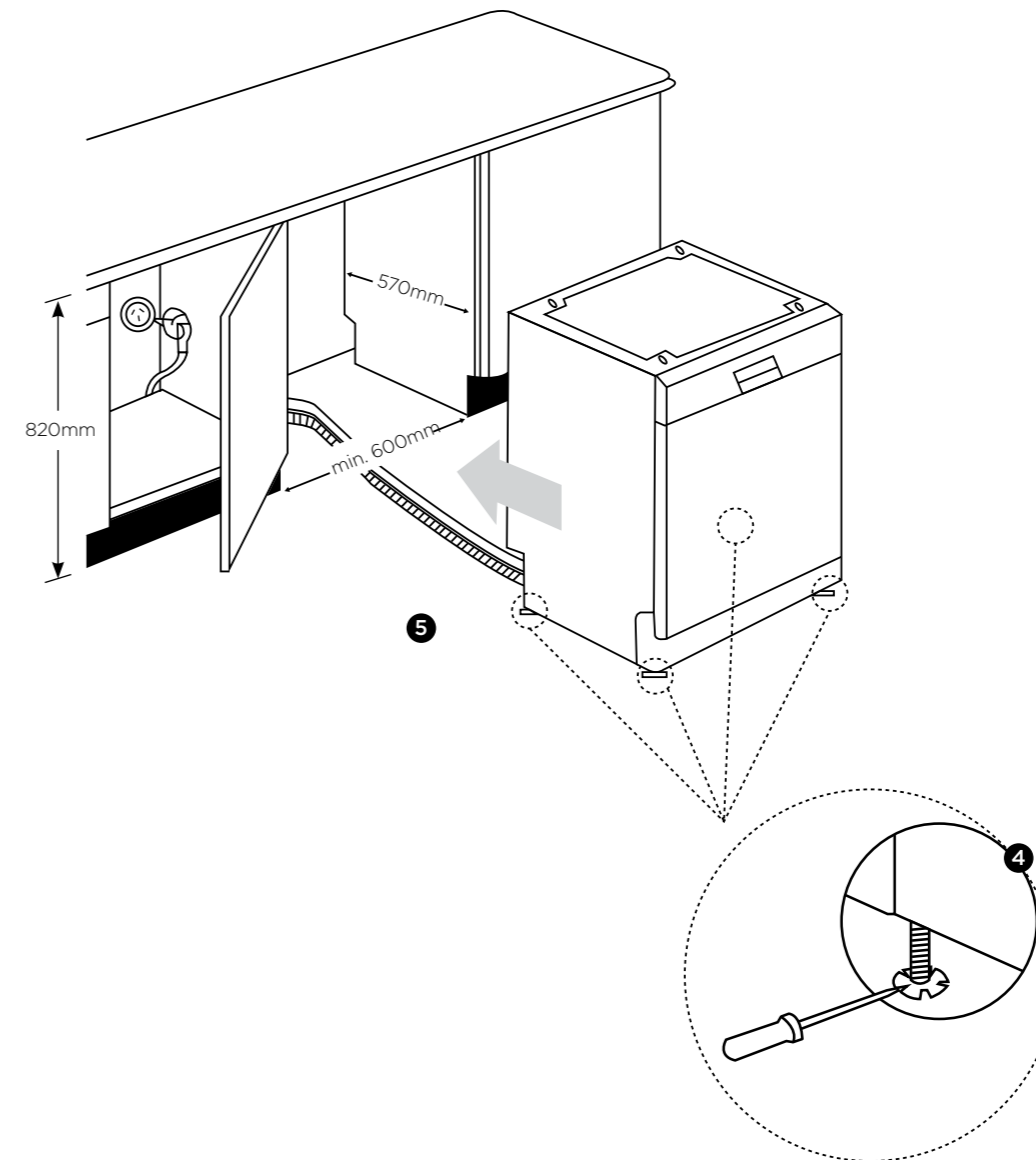
## INSTALLING THE MACHINE

towards the rear and lift it.

- 4 Adjust the machine feet according to the slope of the floor.
- 5 Fit your machine by pushing it undercounter without letting the hoses get crushed or bent.

### WARNING

After removal of worktop, ensure the opening for the dishwasher is according to the following dimensions.



## PREPARING THE MACHINE FOR USE

### Prior to using the machine for the first time

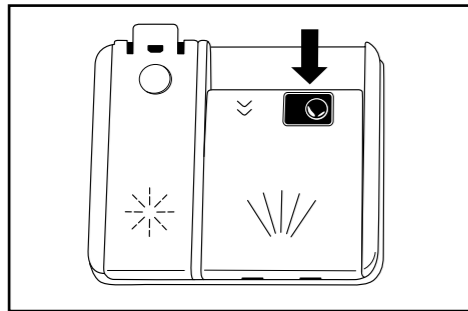
- Check whether the electricity and water supply specifications match the values indicated by the installation instructions for the machine.
- Remove all packaging materials inside the machine.
- Fill the rinse aid compartment.

### Detergent usage

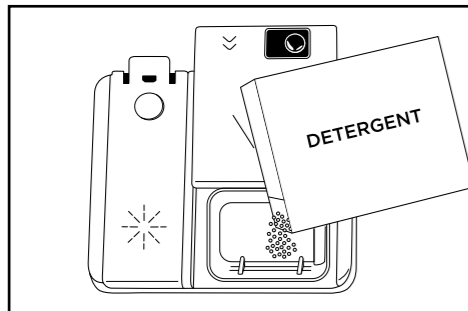
Use a detergent specifically designed for use in domestic dishwashers. You can find powder, gel, and tablet detergents in the market that have been designed for household dishwashers. Detergent should be put into the compartment prior to starting the machine. Keep your detergents in cool, dry places out of reach of your children. Do not fill detergent into the detergent compartment more than required; otherwise it may etch your glasses as well as leaving undissolved detergent in the dishwasher. Should you need more information concerning the detergent you use, contact detergent manufacturers directly.

### Filling the detergent compartment

Push the latch to open the detergent container as shown in the image.



The Detergent pod has level lines inside. It is possible to measure the right detergent amount using these lines.



The detergent pod can take a maximum of 40cm<sup>3</sup> detergent.

Open the dishwasher detergent pod and pour 25cm<sup>3</sup> if your dishes are heavily soiled or 15cm<sup>3</sup> if they are less soiled.

You may have to add more detergent into your machine, depending on the degree of soil and the water hardness in your area.

If your dishes are from the previous day and there is dried food waste on them, or if you have fully loaded the dishwasher, pour 5cm<sup>3</sup> detergent onto the base of the door and start your machine.

### Combined detergent

Detergent manufacturers also produce combined detergents called "2 in 1", "3 in 1" or "5 in 1" etc.

"2 in 1" detergents contain detergent or rinse aid. When using "2 in 1" detergent make sure to check the specifications of the tablet.

Other tablet detergents contain detergent + rinse aid + various extra functions/additives.

Generally, combined detergents produce acceptable results under certain usage conditions only. These detergents contain rinse aid in preset amounts.

Points to consider when using these type of products:

- Always make sure to check the specifications of the detergent you will use or whether or not it is a combined detergent.
- Check if the detergent used is appropriate for the hardness of mains water.
- Observe the instructions on packaging when using such products.
- If detergents are in the form of tablets, never put them into the interior section or the cutlery basket of the dishwasher. Always put the tablets into the detergent compartment in the detergent dispenser.
- Tablets produce good results for certain types of usage only. If you are using this type of detergent, you need to contact the manufacturer and find out about the suitable conditions of use.
- When the conditions of use of such products and the machine settings are appropriate, they ensure savings in rinse aid consumption.
- Contact the detergent manufacturers if you are not obtaining good wash results (if your dishes have limescale and stay wet) after having used 2 in 1 or 3 in 1 detergents. The scope of warranty for your machine does not cover any complaints caused by the use of these types of detergents.

Recommended usage: If you want to obtain better results while using combined detergents, add rinse aid into your machine and the rinse aid setting to the lowest position.

**Solubility of the tablet detergents produced by different companies can vary depending on the temperature and time. Therefore, it is not recommended to use these detergents in short programs. It is more suitable to use powder detergents and rinse aid in short programs.**

### WARNING

Should any problem, which you have not encountered before, occur with the use of these types of detergents, contact the detergent manufacturers directly.

## PREPARING THE MACHINE FOR USE

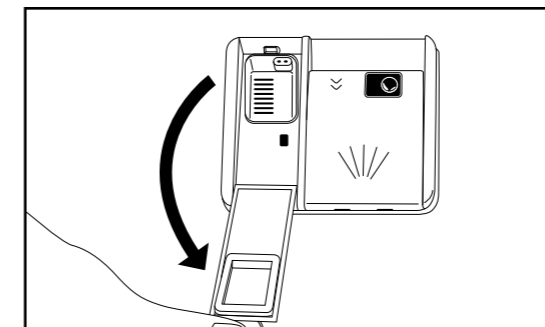
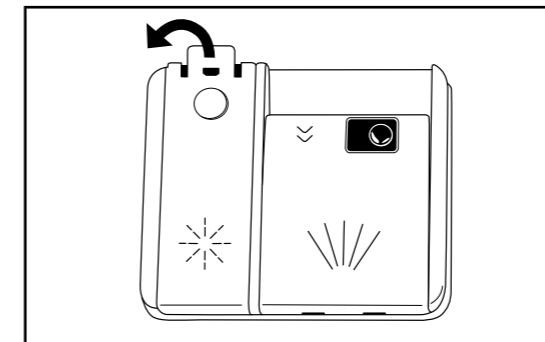


### When you stop using combined detergents

- Fill the rinse aid compartment.
- Select a suitable rinse aid setting.

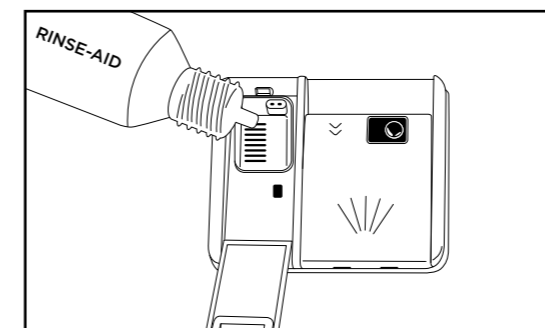
### Filling with rinse aid and setting

To fill the rinse aid compartment, open the rinse-aid compartment cap.



Fill the compartment with rinse aid until MAX level and then close the cap.

Be careful not to overfill the rinse aid compartment and wipe up any spills.



### In order to set rinse aid level, follow below steps:

Push the program (button 1 shown above) and hold it down.

Turn on the machine (button 2).

Hold down the programme button (1) until "rA" disappears from the display.

The machine will display the last setting.

Set the level by pushing the "+" and "-" buttons (3).

Switch off the machine to save the setting.

The factory setting is "4".

If the dishes are not drying properly or are spotted, increase the rinse-aid level. If blue stains form on your dishes, decrease the rinse-aid level.

Level	Rinse-aid dose	Indicator
1	0	r1
2	1.5mL	r2
3	3mL	r3
4	4.5mL	r4
5	6mL	r5

### TIPS AND INFORMATION

Only use rinse aid suitable for automatic dishwashers. As rinse aid residues left as a result of overflowing will create extremely high amounts of foam and reduce the washing performance, remove the excess amount of rinse aid by wiping it with a cloth. Remove all excess rinse aid if spilt while filling.

## LOADING YOUR DISHWASHER

Correctly loaded dishes will result in the best energy consumption, washing and drying performance. There are two separate baskets for you to load your dishes into your machine. You can load into the lower basket round and deep items as pots with long handles, pot lids, plates, salad plates and cutlery sets.

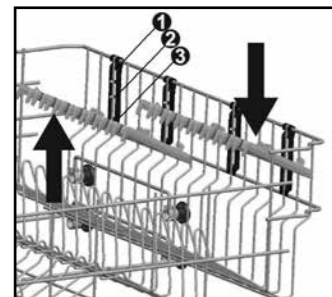
The upper basket has been designed for tea plates, dessert plates, salad bowls, cups and glasses. When placing long-stem glasses and goblets, lean them against the basket edge, rack or glass support wire and not against other items. Do not lean long glasses against one another if they are unsupported, they may break. It is more appropriate to locate the thin narrow parts into the middle sections of baskets. You can place spoons among the other cutlery sets in order to prevent them from sticking to one another. You are recommended to use the cutlery grid in order to obtain the best result. To avoid any possible injuries, always place such long-handle and sharp-pointed items such as serving forks, bread knives etc. with their sharp points facing down or horizontally on the baskets.

### **i** TIPS AND INFORMATION

Ensure the position of the dishware does not prevent the upper or lower spray arm from turning.

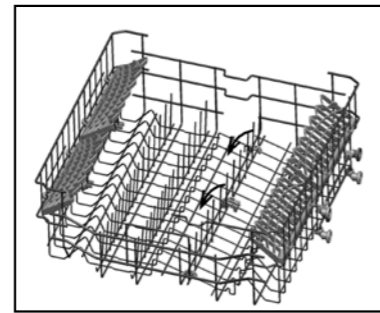
#### Top basket cup rack

These racks are designed to increase the capacity of the top basket. You can place your glasses and cups on the racks. You can adjust the height of these racks. Thanks to this feature, you can place different sizes of glasses under these racks. The cup racks can be adjusted to 3 height positions. In addition, you can place long forks, knives and spoons horizontally, so that they do not block the rotation of the spray arm.



#### Top basket folding supports

Foldable tines (or prongs) on the upper basket are designed to let you place big items easier such as pots, pans, etc. If required, each set of tines can be folded separately, or all of them can be folded and larger spaces can be obtained. You can use foldable tines in the upright position, or by folding down.

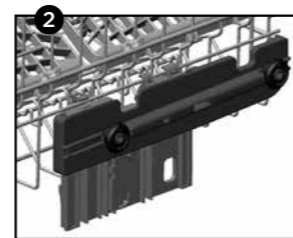
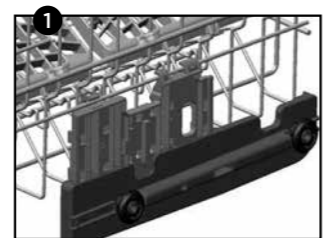
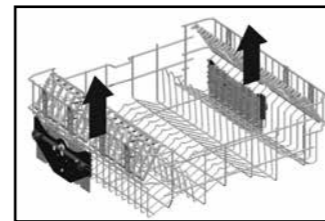


#### Top basket height adjustment while it is full

Basket height adjustment mechanism on the top basket of your machine is designed to let you adjust the height of your top basket (refer to diagram 1) upwards or (refer to diagram 2) downwards, without removing it from your machine when it is full, to create more space at the top or bottom area of your machine as needed. Basket of your machine is set to upper position in factory settings.

In order to raise your basket, hold it from both sides and pull it upwards. In order to lower it, hold it from both sides again, pull upwards then lower carefully.

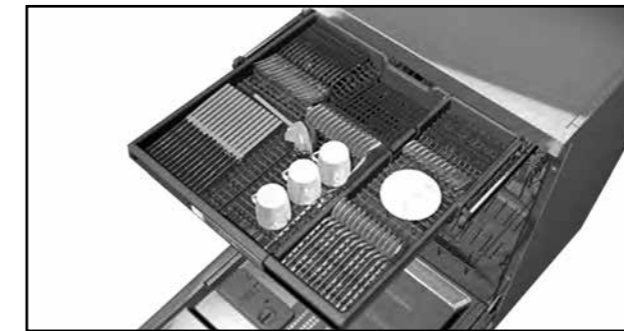
Make sure that both sides are in the same position (up or down).



## LOADING YOUR DISHWASHER

#### Upper Cutlery Basket

The upper cutlery basket is designed for you to place forks, spoons and knives, ladles and small crockery.



Because it can easily be taken out of the machine, it allows your dishes to be taken out of the machine along with the basket after washing.

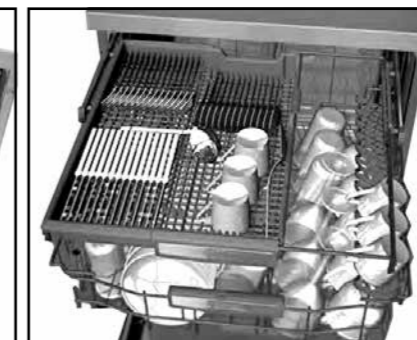
#### Cutlery and dishes to be carried together to another location



The upper cutlery basket is composed of two pieces. If you need to make space for the dishes in the upper basket, you can take out the left or right part of the upper cutlery basket in order to obtain more space.

### **!** WARNING

The upper cutlery basket must then be moved together with the upper basket.



### **!** WARNING

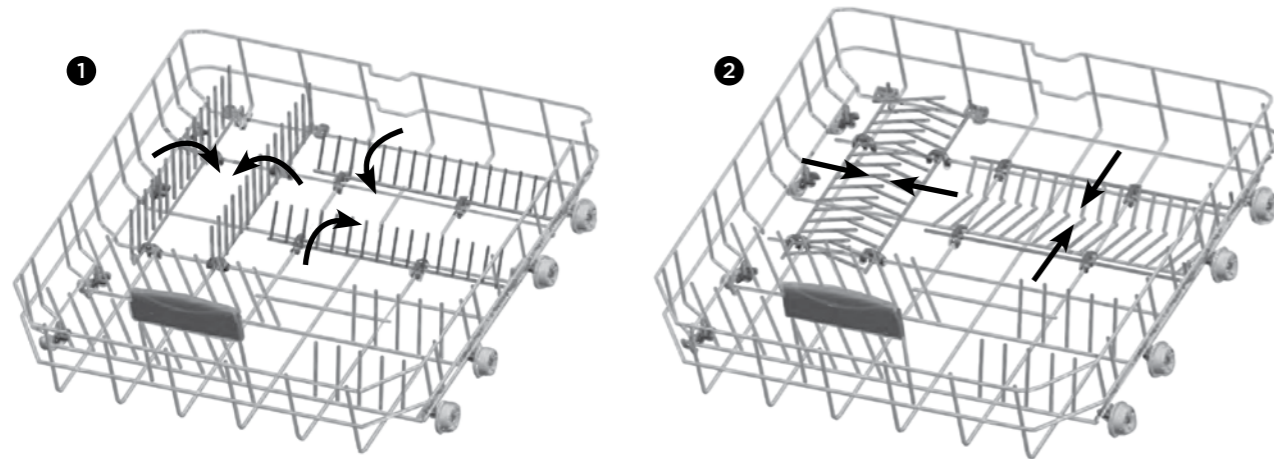
Knives and other sharp objects must be placed horizontally in the cutlery basket.



## LOADING YOUR DISHWASHER

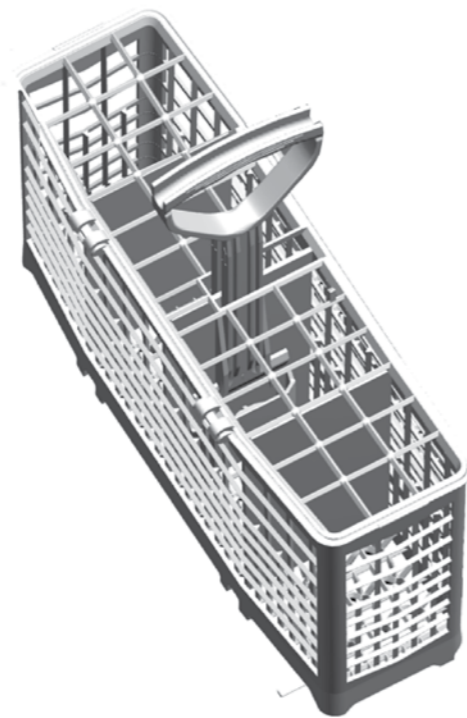
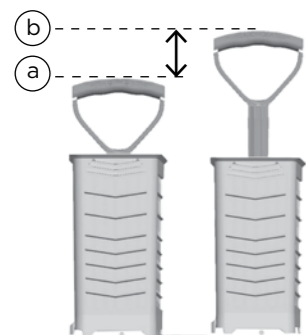
### Lower basket folding racks

Folding tines (prongs) consisting of four parts that are located on the lower basket of your machine are designed to let you place big items easier such as pots, pans, etc. If required, each part can be folded separately, or all of them can be folded and larger spaces can be obtained. You can use folding tines (prongs) in the upright position, or by folding down.



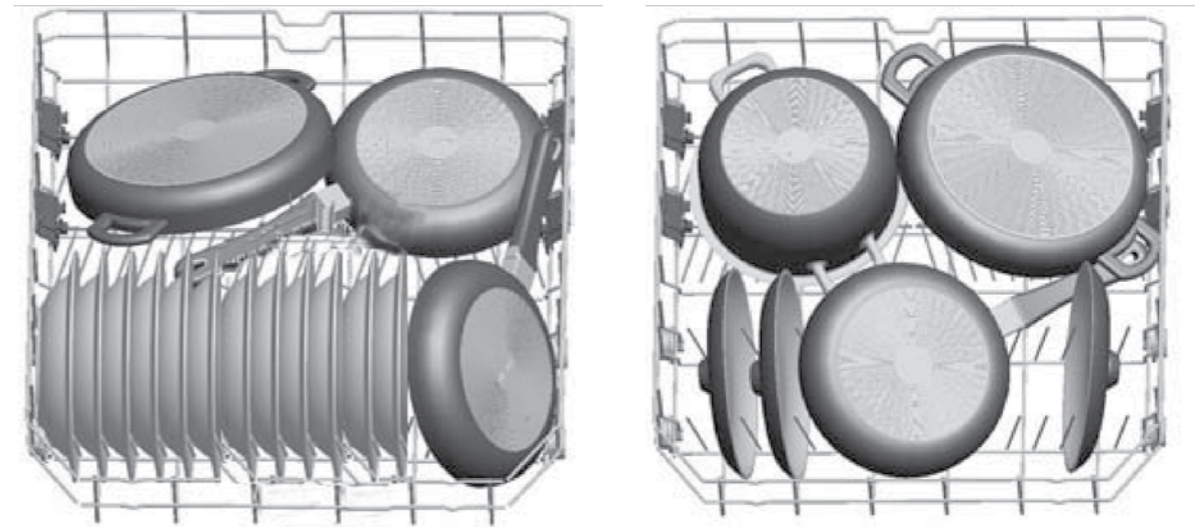
### Alternate cutlery basket

An alternate cutlery basket has been provided for convenience. The cutlery basket handle is adjustable - position (a) or (b). The basket can be used in the upper or lower dishwasher basket as required.



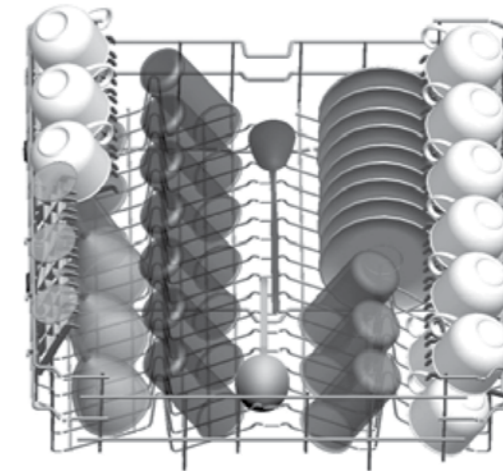
## LOADING YOUR DISHWASHER

### Alternative basket loads Lower Basket



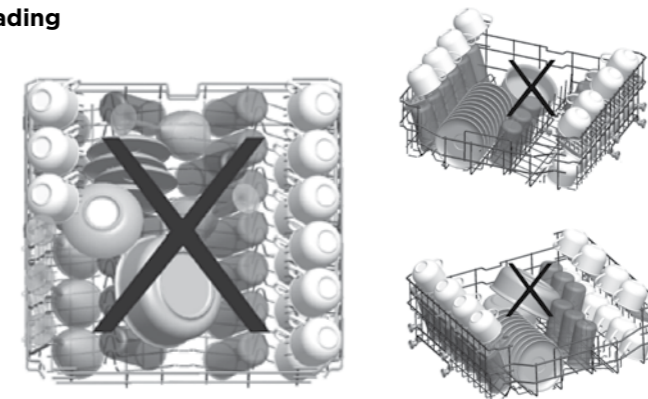
\* Illustration only

### Top Basket



### **i** TIPS AND INFORMATION

#### Examples of incorrect loading



## PROGRAM DESCRIPTIONS

### Program items

NAME OF PROGRAM	RINSE**	FAST 30	ECO*	TIME SAVE	HEAVY	AUTO 30 - 50	AUTO 50 - 60	AUTO 60 - 70
WASHING TEMPERATURE	-	40°C	50°C	65°C	60°C	30 - 50°C	50 - 60°C	60 - 70°C
TYPE OF FOOD SOILS	Fresh, less dirty, coffee, milk, tea	Fresh coffee, milk, tea, cold meat, vegetables	Fresh coffee, milk, tea, cold meat, vegetables	Baked on soup, sauce, pastry, egg, rice, potato and meats cooked in oven, fried food	Fresh coffee, milk, tea, cold meat, vegetables	Detects contamination level of dishes and sets temperature and amount of washing water and washing period automatically		
LEVEL OF FOOD SOILS	Small	Small	Medium	Medium	Medium	Small	High	High
AMOUNT OF DETERGENT A: 25GM/ 15GM B: 5GM	-	A: 15	A: 25 B: 5	A: 25 B: 5	A: 25 B: 5	A: 25	A: 40 B: 5	A: 40 B: 5
	Pre-wash	40°C Wash	30°C Wash	65°C Wash	Pre-wash	Detects contamination level of dishes and sets temperature and amount of washing water and washing period automatically		
	Finish	Cold Rinse	50°C Wash	Intermedi-ate Rinse	60°C Wash			
		Hot Rinse	Cold Rinse	Hot Rinse	Cold Rinse			
		End	Hot Rinse	End	Hot Rinse			
			Dry		Dry			
			End		End			
PROGRAM TIME (MINS)	15	30	159	50	94	64 - 92	100 - 121	111 - 178
POWER CONSUMPTION (KW HOUR)	0.02	0.78	0.95	1.21	1.34	0.76 - 0.95	1.09 - 1.40	1.22 - 1.85
WATER CONSUMPTION (LITRES)	4.2	10.9	13.5	10.7	14.4	10.6 - 17.7	10.9 - 18.5	12.3 - 24.6
SELECTABLE OPTIONS	Half Load	Half Load	Half Load	Half Load	Half Load	Half Load	Half Load	Half Load
		Extra Dry	Extra Dry	Extra Dry	Extra Dry	Extra Dry	Extra Dry	Extra Dry
		Extra Rinse	Extra Rinse	Extra Rinse	Extra Rinse	Extra Rinse	Extra Rinse	Extra Rinse
		Tablet	Tablet	Tablet	Tablet	Tablet	Tablet	Tablet
			Hygiene	Hygiene	Hygiene	Hygiene	Hygiene	Hygiene

### Information for test laboratories

For all the necessary information for performance testing, send an email to [dishwasher@standardtest.info](mailto:dishwasher@standardtest.info)  
In your mail please provide the model number and PNC number that is on the rating plate on the appliance door.

\* Recommended program for normally soiled load.

\*\* Only powder detergent should be used in the Rinse program.

At the end of the program, for improved drying results, it is recommended the door be opened approximately 50mm for some minutes before removing the dishes.

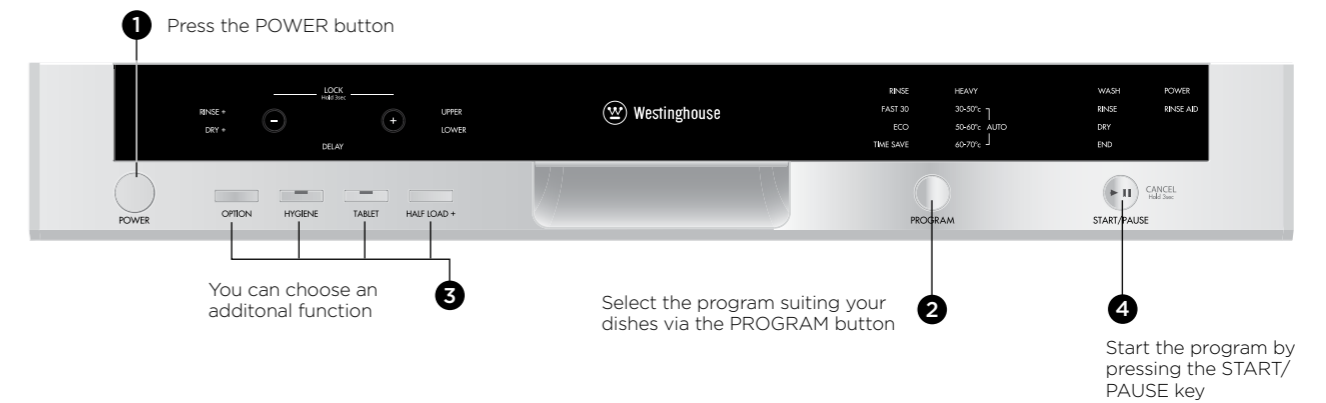


### WARNING

Short programs do not include a drying step. The values declared above are the values obtained under laboratory conditions according to relevant standards. These values can change depending on conditions of product's use and environment (network tension, water pressure, water input temperature and environment temperature).

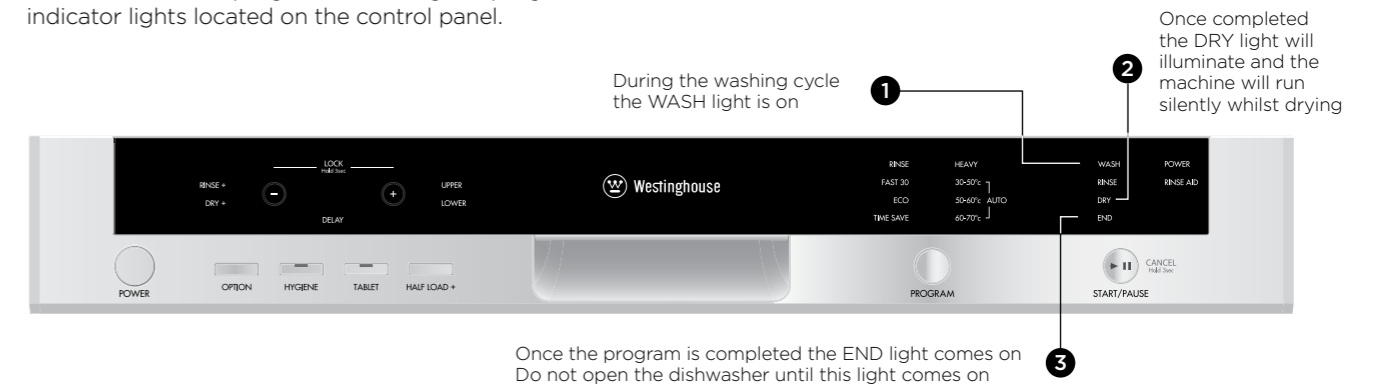
## SWITCHING ON THE MACHINE AND SELECTING A PROGRAM

### Switching on the machine



### Progress indicator

You can follow the program flow using the progress indicator lights located on the control panel.



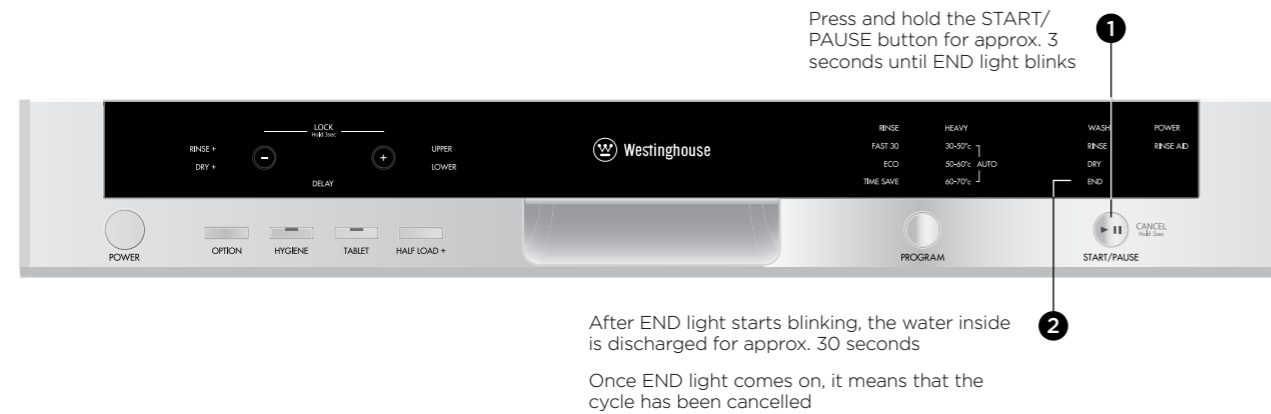
## Changing a program

If you would like to change programs while a washing program is on.

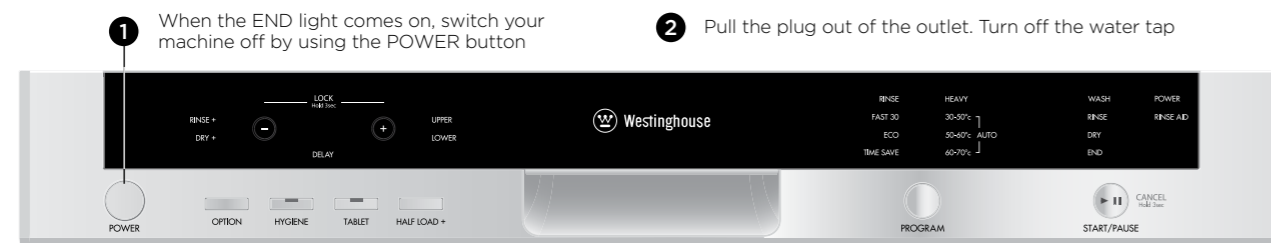


## Cancelling a program

If you would like to cancel a program while a washing program is in progress.



## Switching the machine off



## TIPS AND INFORMATION

**NOTE:** If the machine door is opened during washing or the power is cut off, the machine resumes the program when the door is shut or the power comes back.

**NOTE:** For better drying results, when the program has finished keep the door ajar for some minutes before you remove the dishes.

## MAINTENANCE AND CLEANING

Switch off the power supply or disconnect the product before any maintenance or cleaning operation.

Cleaning the machine at regular intervals prolongs the machine's service life.

Oil and lime may accumulate in the machine's washing section. To clean the machine:

Fill the detergent compartment with detergent, do not load any dishes into the machine, select a program that runs at high temperature, and start the machine. Alternatively, use descaling material available in the market. (Dishwasher cleaners produced by detergent manufacturers.)

### Cleaning the seals in the machine door

To clean any accumulated residues in the door seals, wipe the seals regularly by using a dampened cloth.

### Cleaning the machine

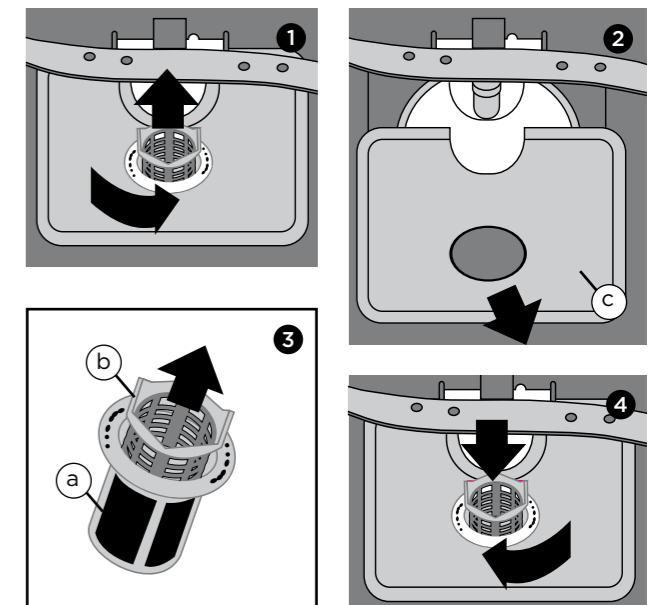
Clean the filters and spray arms at least once a week. Unplug your machine and turn off its tap before starting the cleaning. Do not use abrasive materials when cleaning your machine. Wipe with a fine cleaning material and a dampened cloth.

### Filters

Check if any food wastes have remained on the coarse and fine filters. If any food wastes is found, remove the filters and clean them thoroughly with water under the tap.

- Micro Filter
- Coarse Filter
- Metal

- To remove and clean the filter combination (a+b), turn it counter clockwise and remove it by lifting upwards.
- Pull and remove the metal filter (c).
- Then pull the coarse filter (b) out of the micro filter. Rinse it with water under the tap and reassemble.
- Relocate the Coarse/Micro filter (a) combination into the metal filter and turn it in the direction of the arrow. It is locked when the arrows on the micro filter can be seen on either side.
- Reposition the metal filter in the machine.
- Never use your dishwasher without any filter.
- Incorrect fitting of the filter will reduce the washing effectiveness.
- Clean filters are very important in terms of the proper running of the machine.

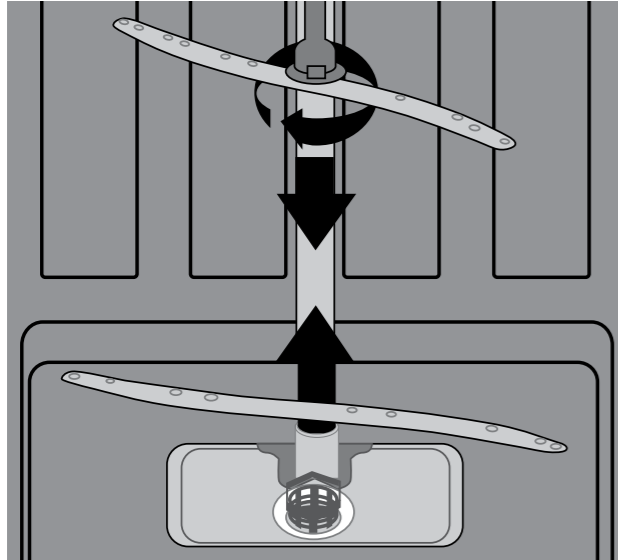


## MAINTENANCE AND CLEANING

### Spray arms

Check whether the holes for the upper and lower spray arms are clogged. If there is any clogging, remove the spray arms and clean them under water.

You can remove the lower spray arm by pulling it upwards, while the upper spray arm can be removed by turning the lock nut to the left. Be sure that the nut is tightened when refitting the upper spray arm.



### Hose filter

The inlet hose filter reduces contamination (sand, clay, rust etc.) that might be occasionally carried in through the main's water supply or the indoor plumbing, and avoids damage to dishwasher components. Check the filter and the hose from time to time and clean them if necessary. To clean the filter, first turn off your tap and then remove the hose. After removing the filter from the hose, clean it under the tap. Insert the cleaned filter back into its place inside the hose. Refit the hose and check that there are no leaks.

## FAILURE CODES AND WHAT TO DO IN CASE OF FAILURE

ERROR CODE	ERROR DESCRIPTION	CONTROL
F1	Leak detection	<ul style="list-style-type: none"> <li>Switch off the dishwasher and close the tap</li> <li>Contact the service centre.</li> </ul>
F2	Draining fault	<ul style="list-style-type: none"> <li>Cancel program and power off machine, then check the following</li> <li>Spigot on sink trap is clogged</li> <li>Check if the drain spigot membrane has been removed</li> <li>Drain hose is clogged</li> <li>Filters of the dishwasher may be clogged</li> <li>If error continues contact the service centre.</li> </ul>
F3	Water overfill	<ul style="list-style-type: none"> <li>Close the tap</li> <li>Contact the service centre.</li> </ul>
F5	Water supply fault	<ul style="list-style-type: none"> <li>Make sure the water tap is open and the main water supply is on</li> <li>Close the tap, disconnect the hose and clean the filter at the tap connection end</li> <li>Check the inlet hose is not kinked</li> <li>If error continues contact the service centre.</li> </ul>
F6	Faulty heater sensor	<ul style="list-style-type: none"> <li>Contact the service centre.</li> </ul>
F7	Overheating (water temperature too high)	<ul style="list-style-type: none"> <li>Contact the service centre.</li> </ul>
F8	Not heating	<ul style="list-style-type: none"> <li>Contact the service centre.</li> </ul>
F9	Flow control position error	<ul style="list-style-type: none"> <li>Contact the service centre.</li> </ul>
FE	Power supply fault	<ul style="list-style-type: none"> <li>Restart the dishwasher.</li> </ul>
H01 - H24	Delay has been selected	<ul style="list-style-type: none"> <li>Cancel the delay setting.</li> </ul>

## PRACTICAL AND USEFUL INFORMATION

- Whenever you will not be operating your machine:
  - Unplug the machine and then turn the water off.
  - Leave the door slightly ajar in order to prevent the formation of unpleasant odours.
  - Keep the machine interior clean.
- Eliminating water droplets:
  - Wash the dishes with the intensive program.
  - Increase the rinse aid setting.
  - If plastic items are washed, water drops on these items will be unavoidable. Programs with higher temperatures and increased rinse aid settings may reduce the water drops. Check that the plastic items are suitable for dishwasher use.
- Correctly loaded dishes will give the best energy consumption, washing and drying performance.
- Scrape off food soils before you place dirty dishes in the machine.
- Operate the machine after it is completely full.
- Use pre-washing program only when necessary.
- Observe program information and average consumption values table when selecting a program.
- Since the machine will reach high temperatures, it should not be installed near a refrigerator.
- If the appliance is located where the risk of freezing exists, you must completely drain the water that has remained in the machine. Turn off the water tap, disconnect the water inlet hose from the tap and allow the interior water to drain.





**For more information on all Westinghouse appliances,  
or for dimension and installation information, call into  
your retailer, phone or email our customer care team  
or visit our website:**

**AUSTRALIA**

phone: 1300 363 640

fax: 1800 350 067

email: [customercare@electrolux.com.au](mailto:customercare@electrolux.com.au)

web: [westinghouse.com.au](http://westinghouse.com.au)

**NEW ZEALAND**

phone: 0800 436 245

fax: 0800 225 088


email: [customercare@electrolux.co.nz](mailto:customercare@electrolux.co.nz)

web: [westinghouse.co.nz](http://westinghouse.co.nz)

**TOP SERVICE**

Top Service encompasses the after sales service provided by The Electrolux Group to consumers including delivery, home service and spare parts.

**P/No: 5208 2734 Issue: F**

 and WESTINGHOUSE are trademarks of Westinghouse Electric Corporation.  
Used under license by Electrolux Home Products Pty Ltd. All Rights Reserved.

© 2019 Electrolux Home Products Pty Ltd.  
WMAN\_WSF6608\_May19